

# ► The Allstar XL Series

Ford 650 Chassis

**STARCRAFT BUS**  
a division of Forest River, Inc.

# ► The Allstar XL Series

Ford 650 Chassis

**STARCRAFT BUS**  
a division of Forest River, Inc.

## ► Standard Exterior Feature Highlights

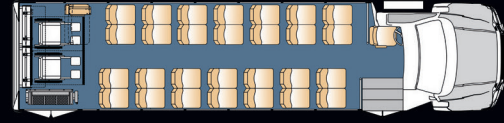
- 96" wide exterior body
- Fully welded steel cage construction meeting all applicable FMVSS requirements
- "Starview" drivers visibility window in front of entry door
- Electric actuated passenger entry door with full length glass
- 36" wide x 36" high upper double T-Slider tempered safety glass windows with climate control tint
- Black powder coated steel rear bumper
- Rear mud flaps
- Pre-painted white aluminum side walls and skirts
- Fiberglass front and rear caps
- One-piece seamless FRP (fiberglass reinforced plastic) roof
- Breakaway rearview mirrors with convex
- Sealed LED stop, tail, and turn signal lights with LED reverse lights
- LED front and rear marker lights
- Exterior graphics package available in three colors (blue, green or burgundy)

## ► Standard Interior Feature Highlights

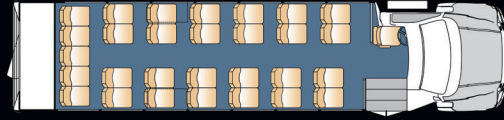
- Flat floor (no wheel wells) with 81" interior floor to ceiling height
- Floor and wall seat track for flexible seating
- Black slip resistant floor covering
- White step nosing at passenger entry door
- 5/8" exterior grade plywood flooring
- Ceiling and rear wall fabric for sound abatement
- FRP (fiberglass reinforced plastic) sidewalls for ease of cleaning
- White step nosing
- 1.25" left hand vertical passenger assist rail at entry door
- Printed circuit board with automotive type fuses and LED trouble shooting lights
- LED entry door step well lights
- LED driver and passenger area lighting
- Non-retractable seat belts

## ► Popular Option Highlights

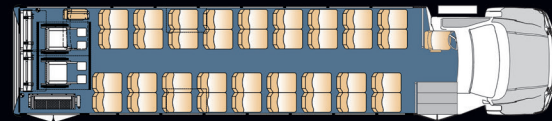
- Stainless steel wheel inserts
- Luggage storage areas (overhead luggage racks with reading lights, interior luggage racks, rear storage area)
- Rear emergency door with window(s)
- Passenger area rear heat and air conditioning
- Complete rubber flooring
- Passenger grab rails
- Padded vinyl or cloth walls and ceiling
- Audio and video systems
- Mid back or high back seating
- ADA and FMVSS compliant wheel chair lifts and securement systems



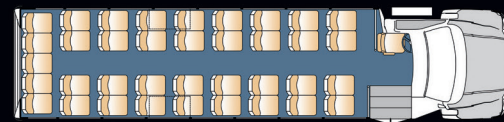
28 Passenger Plus 2 Wheelchair  
1 Passenger Foldaway and 2 Passenger Flip Seats Plus Driver



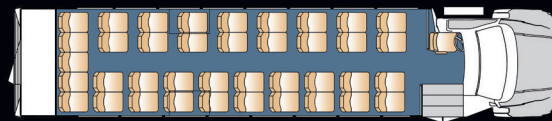
29 Passenger with Rear Luggage Plus Driver



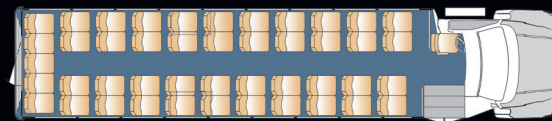
36 Passenger Plus 2 Wheelchair  
1 Passenger Foldaway and 2 Passenger Flip Seats Plus Driver



37 Passenger Plus Driver



39 Passenger with Rear Luggage Plus Driver



45 Passenger Plus Driver



Due to our commitment to product quality, specifications and options are subject to change without notice in the interest of product improvement and market changes.

Scan this barcode using a QR Reader on your smart phone to learn more about Forest River.



**STARCRAFT BUS**  
a division of Forest River, Inc.

2367 Century Drive • Goshen, IN 46528 • Lit. No. SCB-25/121516  
1.800.348.7440 • Fax: 574.642.3301 • www.starcraftbus.com

► Engineered to Perform



Creative Bus Sales 800.326.2877 CreativeBusSales.com

► **The Allstar XL Series**  
Ford 650 Chassis

Engineered to Perform

**STARCRAFT BUS**  
a division of Forest River, Inc.



► When you are looking for engineering that performs, the Allstar XL Series from Starcraft Bus delivers. The XL, with its solid, steel cage frame, utilizes the same construction as the time-tested Allstar. Built on Ford's 650 chassis, this bus utilizes straight side wall construction and features a wide aisle to maximize shoulder space, offering a spacious and comfortable experience for your passengers.

The Allstar XL is engineered to accommodate a variety of seating arrangements including wheelchair accessibility and numerous storage options for luggage. The roomy driver area allows for easy maneuvering in and out of the driver's seat and increased visibility for the driver. Finally, whether its the forward-tilting hood for ease of maintenance or the time-tested Allstar body construction, the Allstar XL's Ford 650 chassis beats the competition hands-down. Choose the Allstar XL... engineered to perform.

Starcraft Bus, a division of Forest River, Inc., is owned by Berkshire Hathaway, one of the most respected and financially secure companies in the industry.



► **Allstar XL Features**

Features to Meet Your Specific Needs



Spacious interior with high-back seats and overhead luggage racks



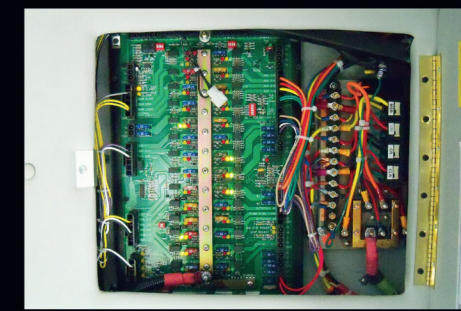
Conveniently located switches and easily-accessible driver's area



Stylish fiberglass rear cap with rear luggage access door



Optional mid-back seats, padded vinyl walls and ceiling, and wheelchair accessible



Printed electrical circuit board with LED trouble-shooting lights



Optional ADA wheelchair lift mounted in the rear of the bus

